

## City of Sheffield, England and Wales

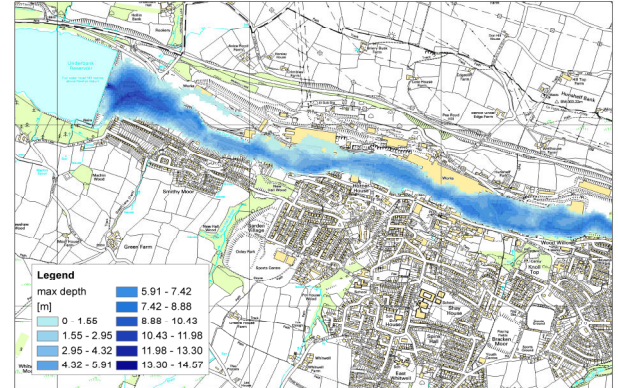
### Main characteristics

**Major type of flood:** Surface water floods and dam failure

**Past flood events:** In 1864 collapse of the Dale Dyke Dam killed 270 people in Sheffield. In 2007 there was extensive flooding from the River Don and pluvial sources.

**Environmental setting:** The case study focused on the city of Sheffield and the application of tools to assess the impact of the failure a dam near Sheffield.

**Socio-economic setting:** The city of Sheffield is has a population of approximately 547,000.



Simulated flood depths for the dam breach

### Level of stakeholder involvement

The following stakeholders were involved in the case study:

- Environment Agency who are responsible for flood risk management
- Local emergency planners responsible for writing the emergency plan
- The fire and rescue services
- The police

These were engaged with via a number of meetings and workshops.

### CRUE Activities

The framework to assist with developing and improving flood emergency plans was applied to the Multi-Agency Flood Plan that had been developed for Sheffield in conjunction with the key stakeholders. The MAFP was scored using the metrics that were developed as part of the plan. The case study was used to refine the framework. As part of the case study a breach scenario was created for reservoir in the area. This helped raise awareness of the use of tools to improve emergency plans.

### Specific outcomes

- Development and improvement of a framework to help improve emergency plans of floods
- Demonstration of tools that can improve emergency plans

### Lessons learnt

The framework was implemented and improved via a number of workshops and found to be a useful tool to assist with the development and improvement of emergency plans for floods.

### CRUE Project

Flood Incident Management – A Framework for improvement (FIM FRAME) Funded from 1 September 2009 to 31 August 2011 within the 2<sup>nd</sup> CRUE Funding initiative "Flood resilient Communities".

### Partners

HR Wallingford, England  
Laboratoire Central des Ponts et Chaussées, France  
University of Montpellier III, France  
Deltares, The Netherlands

### Funders

Department for Environment, Food and Rural Affairs/Environment Agency, England and Wales  
Ministère de l'Ecologie, de l'Energie, du Développement Durable et de la Mer, France